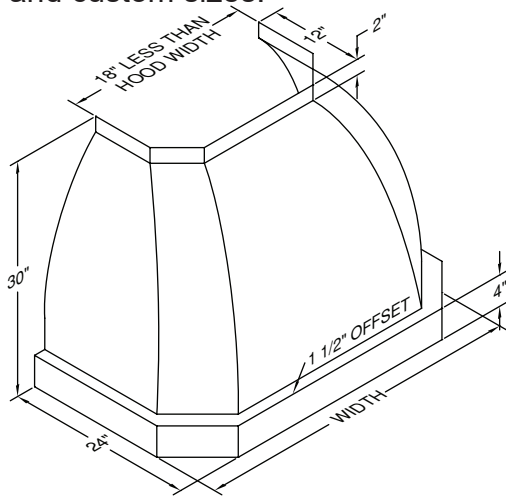
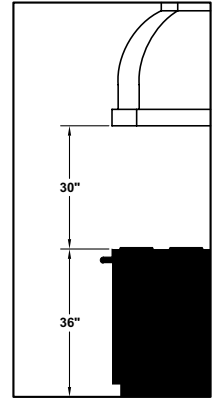


JCH/C1 Series Equipped with LED lighting. Not available with heat lamps. Optional duct covers available in standard and custom sizes.

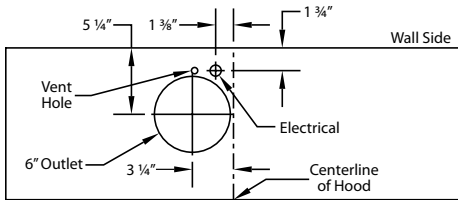


Recommended Mounting Height

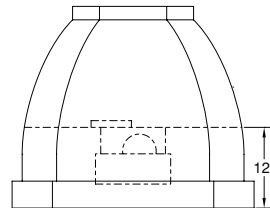


*Recommended mounting height is for optimum performance.

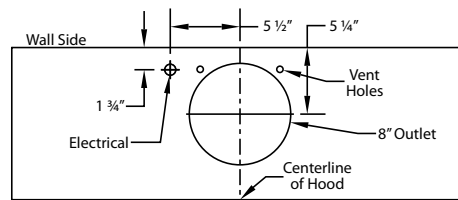
Connection Diagrams (36" - 48" Widths)



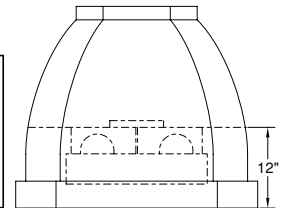
B100 Single Blower (Top View)



(Front View)

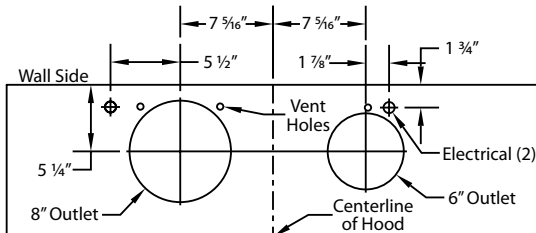


B200 Dual Blower (Top View)

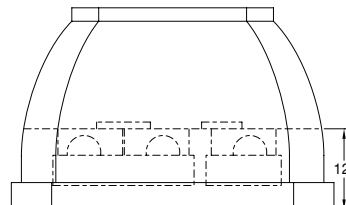


(Front View)

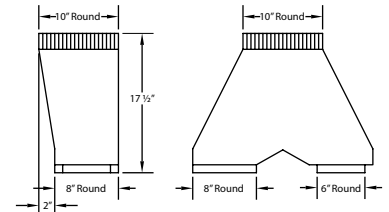
Connection Diagram (48" - 60" Widths)



900 CFM B200 Dual & B100 Single Blower (Top View)

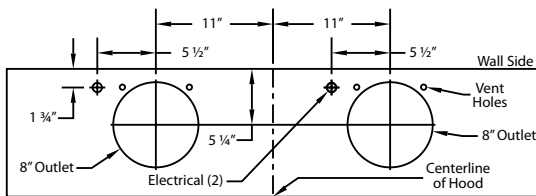


(Front View)

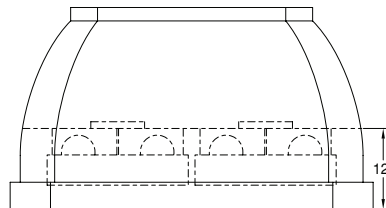


VP562 Standard Transition Optional

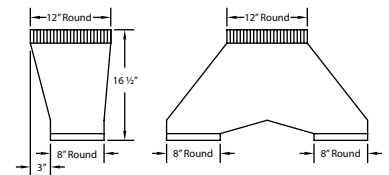
Connection Diagram (54" - 66" Widths)



1200 CFM Double B200 Dual Blowers (Top View)



(Front View)



VP563 Standard Transition Optional

Electrical/Mechanical Specifications For Blower Units

| Model | Volts | Amps | Hz | RPM | CFM SP@0.0" | Equivalent CFM* | CFM SP@0.1" | CFM SP@0.2" | CFM SP@0.3" | Minimum Round Duct Size | Sones# |
|-------------------------|-------|------|----|------|-------------|-----------------|-------------|-------------|-------------|------------------------------------|--------|
| B100 Single | 115 | 2.5 | 60 | 1550 | 300 | 450 | 273 | 245 | 225 | 6" (28 in. ²) | 5.4 |
| B200 Dual | 115 | 4.0 | 60 | 1550 | 600 | 900 | 531 | 480 | 430 | 8" (50 in. ²) | 6.5 |
| B200 Dual & B100 Single | 115 | 6.0 | 60 | 1550 | 900 | 1350 | 804 | 725 | 655 | VP562: 10" (79 in. ²) | 6.3 |
| Two B200 Duals | 115 | 7.5 | 60 | 1550 | 1200 | 1800 | 1062 | 960 | 860 | VP563: 12" (113 in. ²) | 6.6 |

Hood is available with LED lights (2 lights: 30" - 41", 3 lights: 42" - 53", 4 lights: 54" - 66").

* Because the Magic Lung® blower uses centrifugal filtration rather than conventional baffle or mesh filters, the Magic Lung® blower can handle cooking equipment with higher cubic feet per minute (CFM) requirements and can deliver equivalent CFM much more efficiently than other filtration systems. When comparing the Magic Lung® with other blower units made by other manufacturers, use the "Equivalent CFM".

Ratings in accordance with the Standard Test Code by the Energy Systems Laboratory of the Texas Engineering Experiment Station.